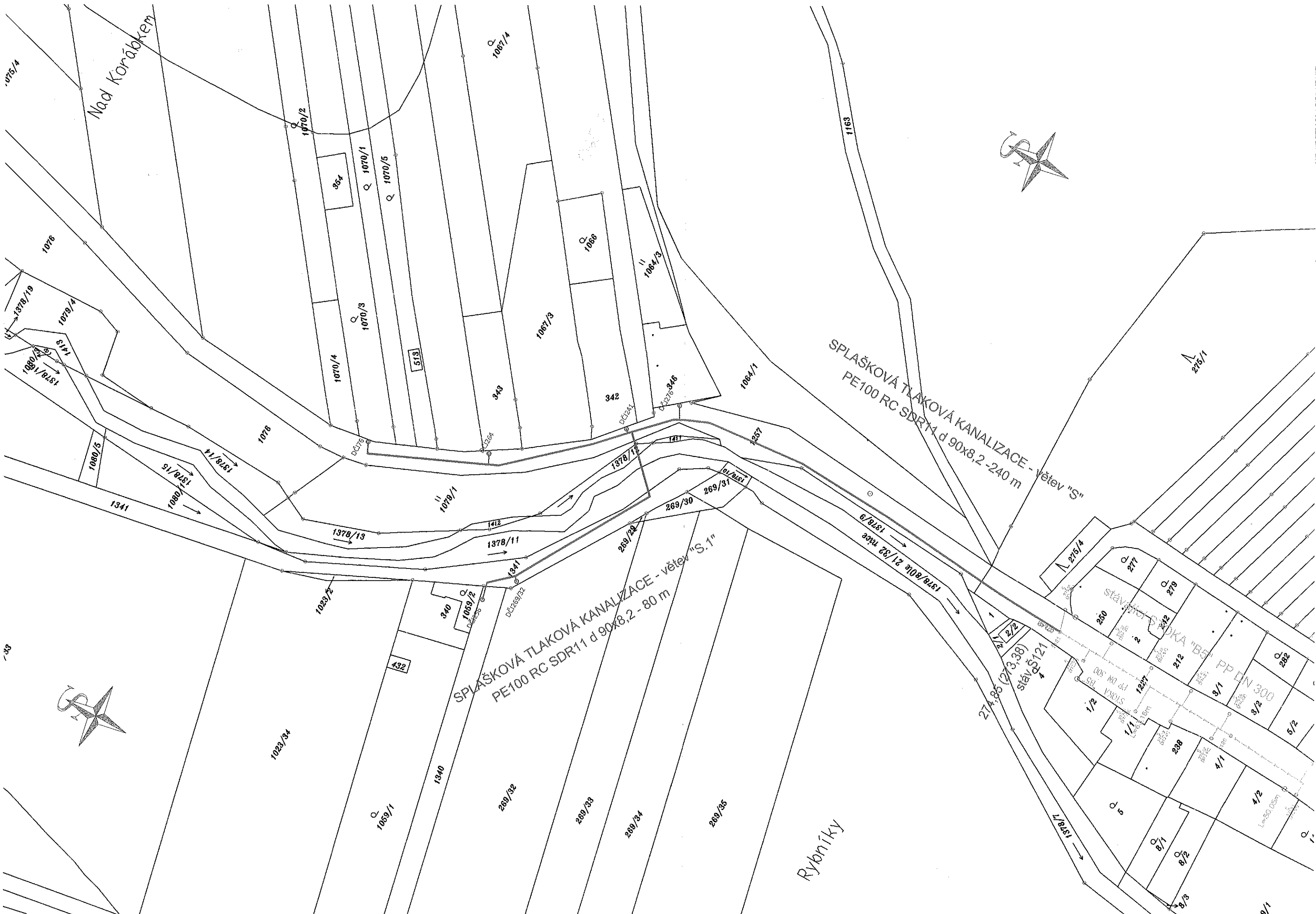


Nad Korábkem

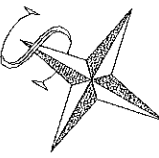
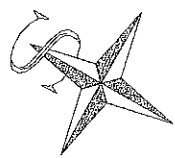
075/4



SPLAŠKOVÁ TLAKOVÁ KANALIZACE - větev "S"
PE100 RC SDR7 d 90x8,2 - 240 m

SPLAŠKOVÁ TLAKOVÁ KANALIZACE - větev "S.1"
PE100 RC SDR11 d 90x8,2 - 80 m

Rybníky



33